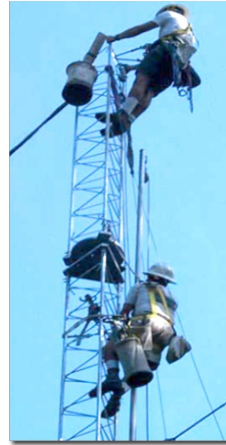


Design Capability

Tower Design

Kadevi is in the field of structural design, manufacture, galvanizing, supply and erection of Towers and other antenna supporting



Kadevi has erected over 10,000 Telecom Towers in various parts of the country from Kashmir to Kanyakumari for Vodafone, TATA, Airtel, BSNL, Indus, Essar etc. and has a capacity to erect over 4000 Towers per annum.



ISO 9001-2008 & ISO 14001-2004 & BS OHSAS 18001-2007
CERTIFIED COMPANY

KADEVI
Serving the Nation since 1964...



Branches:

Delhi
Hyderabad
Chennai
Bangalore

Telecom EPC & TSP

KADEVI
Serving the Nation since 1964...

Kadevi Industries Limited

A1 - A2, Electronic Complex, Kusaiguda, Hyderabad, A.P. India - 500062.
Telephone: +91 40 27121450, Fax +91 40 27121657
Email: epc@kadevigroup.com, www.kadevigroup.com

www.kadevigroup.com



Profile

Kadevi was established in 1964 and started as a small scale industry manufacturing Communication Antennas and Pneumatic Telescopic Masts. Subsequently the company further expanded its wings into various divisions.

Our core strength lies in the team of experienced professionals focusing on creating state-of-art products and ensuring customer service through the application of a wide range of engineering disciplines. Our engineers adhere to strict customer specifications in all our services.

Manufacturing Divisions

- Towers & Galvanising
- Telescopic & Guyed Masts
- Antenna Systems
- Steel Rolling Mill
- Fasteners
- Generators

Service Divisions

- Tower Installations
- EPC & TSP

Kadevi has rapidly grown to a large scale industry in just 3 year's time, received several awards and became a pioneer in all the areas. Today, the company is has a 1000 strong workforce.

Kadevi is one of the leading companies for the engineering design and fabrication of steel structures. We have strong hold in the market, captured in a very short span of time because of well-knit, well-structured move of the partners technically advanced in house latest manufacturing facilities, Design, delivery of quality and cost effective products to clients in time is our motto.

Kadevi is one company which is having a rare combination of full scaled infrastructure under one roof with a state of art in house facilities right from manufacturing of steel sections, fabrication of towers & structures, Hot dip galvanising and high tensile fasteners at Ankireddypally plant. These facilities will ensure the delivery commitments and also will have the complete control on quality.

Our core strength lies in the team of experienced professionals focusing on creating state-of-the-art products and ensuring customer service through the application of a wide range of engineering disciplines. Our engineers adhere to strict customer specifications in all our services.

Telecom EPC & TSP

Kadevi is expanding its horizon into the Engineering, Procurement and Constructions (EPC) and Total Solution Provider (TSP) arena. EPC provides with complete turnkey solutions for construction of any tower site right from government approvals to the RFI of the site. Having years of experience in Design, Engineering and Manufacturing along with well equipped production facilities, Kadevi is confident of meeting customers requirements. Kadevi is committed to produce quality products, meeting delivery deadlines, at competitive prices.

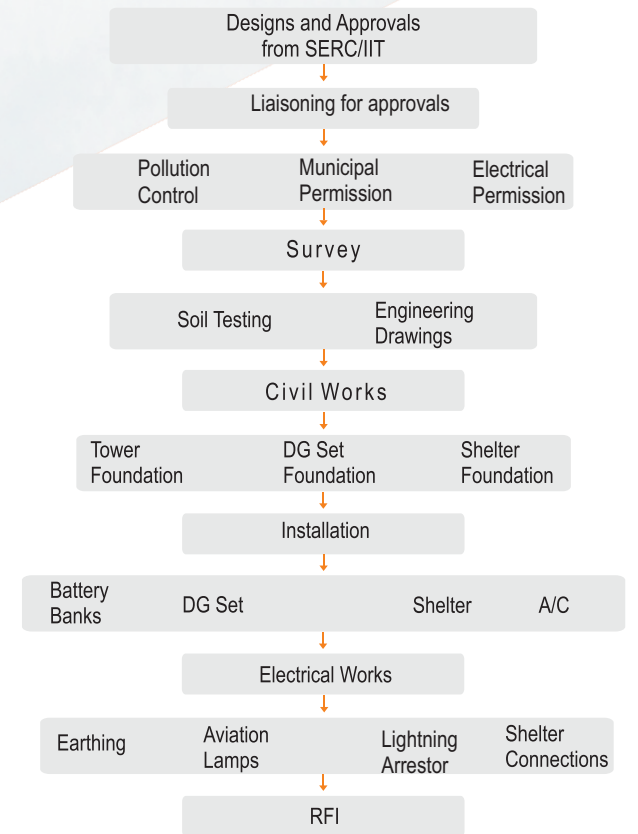
The most critical part of the site is the tower, for which Kadevi has established its name in the industry. Kadevi has a supply capacity of 1000 towers per month of various designs and to various clients across and outside the country. The remaining components of the site like the DG, Shelter, Airconditioner, SMPS, Battery bank, PIU, etc are outsourced.



Flow Chart

- Tower design including obtaining SERC/IIT approvals.
- Liaisoning for approvals – Electricity Board/Pollution Control Board/Municipal authorities
- Detailed site survey – Soil testing/engineering drawings
- Civil Works – Tower foundation/ DG foundation/ Shelter foundation.
- Installation – Towers/DG/Shelter/Air conditioners/Battery banks
- Electrical – Earthing/Aviation lamps/Lightning arrestor/shelter connectivity/cable connections
- RFI – Handing over to client for BTS installation

Flow Chart



Scope of Work

- Site Soil / Structural Survey and foundations design
- Site layout and drawings
- Approvals from local statutory bodies or municipal authorities
- Construction of Tower, Shelter & DG Foundation and other related civil works viz. Site leveling, Access Road, Guard Room, Fencing, Compound Wall, Security Gates
- Tower Supply, Erection and Painting
- Earthing Systems
- Supply & Installation of Shelters
- Indoor and Outdoor Electrical Works including Installation of Lightning Arrestors and Aviation Lamps
- Supply and Installation of Active Infrastructure items like Power
- Supply and Installation of Active Infrastructure items like Power Plant, PMUs / PIUs / PSUs, A/Cs, DGs, Batteries
- Site Monitoring System
- EB Liaisoning for power connection at sites

Design Capability

Tower Design

Kadevi is in the field of structural design, manufacture, galvanizing, supply and erection of Towers and other antenna supporting structures for which Kadevi is fully equipped with state of art structural analysis and design tools. The design office is equipped with computer aided design and drawing facilities.

KADEVI has a team of experienced structural designers along with other skilled staff capable of designing and manufacturing towers of height up to 150m with the help of CAD/CAM tools meeting the requirements of customer. Finite element based analysis is carried out for design of towers.

Software like STAAD Pro/NASTRAN are available with us for structural design and analysis of all types of communications Antenna Supporting structures including foundations. The drawing work is done using Auto-CAD 2008 software package. The design office is equipped with the latest output devices like printer and plotters. and analyzed using finite element software. The tower is idealized as three-dimensional structure. Tower members are modelled as one dimensional, two noded truss elements having 3 degrees of freedom at each node. The tower is designed to withstand wind load, antenna loads and other gravity loads.

KADEVI has formed a separate EPC & TSP division structured with 250 people exclusively focusing on project management. This division is having offices and warehouses in 6 states and fully structured with liaisoning cell, material department, survey department, civil engineering department, electrical engineering department and installation department with professional management and engineers thoroughly trained to meet the highest standards of quality and time lines and will executes the projects as per the customers specifications.

